

# **In a station of the metro**

three movements  
for SATB choir

Music by Adam Basanta  
Text by Ezra Pound

April 2010

**In a station of the metro / Ezra Pound**

The apparition of these faces in the crowd ;  
Petals on a wet, black bough.

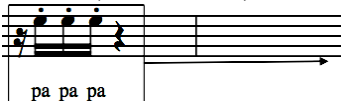
**Program Notes:**

Staying true to the work's reputation as a quintessential Imagist poem, I chose to musically explore the literary attempt to subvert the ongoing temporal flow, to present the observations noted by Pound at a Paris metro station as a series of moments, frozen in time. Parsing the text, a series of clear, isolated objects emerge – their slight musicalized variations allow different facets of each moment to materialize. At other times, these objects are broken into their components, like white light passed through a prism. The lack of clear signification in the original text is preserved, as the work is neither about a metro station, a crowd, or flower petals. Rather, the emphasis is on the experiential phenomena itself, its wide range of colours, shades and tints.

## Performance Notes:

Accidentals: ♯ = ¼ tone sharp, ♭ = ¼ tone flat

Boxes (seen below):

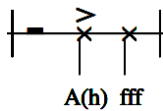


Musical material within the box serves as material for motivic improvisation, and may be freely displaced to create textural effects. Duration of improvisation is indicated by the arrow.

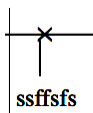


In the event of two boxes separated by a vertical line, follow instructions above while freely using material from either box in improvisation.

Staves, note-heads, and pronunciation:



Appearing in the 2<sup>nd</sup> and 3<sup>rd</sup> movements, single staff lines and X shaped note-heads indicate un-pitched vocalization. For the vocalizations of *A(h)* or *T(hay)*, accent un-bracketed letter and voice the bracketed portion with the outgoing breath. Other vocalizations should be pronounced phonetically, keeping in mind that they are all derived from the source text and title.



In the case where the vocalization *ssffsfs* is assigned, alternate freely between the two consonants for the duration of note.

# In a station of the metro

Adam Basanta  
text by Ezra Pound

*i: apparition*

brooding ♩ = 92

Soprano *mf* > *mp* > *p* *mf*

hay \_\_\_\_\_ tion Eh \_\_\_\_\_ tion

Alto *ff* *p* *p* (rolled) *p* < *f* *mp*

T \_\_\_\_\_ pa \_\_\_\_\_ pa R \_\_\_\_\_ ri

Tenor *ff* *mf* *p* < *f* *f* *mp*

8 \_\_\_\_\_ (rolled) \_\_\_\_\_ ri \_\_\_\_\_ R \_\_\_\_\_ tion \_\_\_\_\_ pa \_\_\_\_\_

Bass \_\_\_\_\_ (rolled) *p* < *f* *mf* *mp* < *f* *f* >

8 \_\_\_\_\_ R \_\_\_\_\_ Eh \_\_\_\_\_ ri

7 see performance notes ~ 15 secs *ppp* ♩ = 112 with energy

S *f* *p* *ppp* *mf*

ap pa pa pa pa the

A *f* *p* *ppp* *f*

ri - tion pa pa the

T *f* *p* *ppp* *f*

8 pa pa pa pa the

B *f* *p* *ppp* *f*

tion pa pa pa pa the

14 *f* *mf* *f* *ff*

S ap - pa ap - pa - ri - tion ap - pa - ri - tion \_\_\_\_\_

A *mf* *f* *ff*

ap - pa ap - pa - ri - tion ap - pa - ri - tion \_\_\_\_\_

T *mp* *f* *ff*

8 ap - pa ap - pa - ri - tion ap - pa \_\_\_\_\_ ap - pa - ri - tion \_\_\_\_\_

B *p* *f* *ff*

ap - pa ap - pa - ri - tion ap - pa \_\_\_\_\_ ap - pa - ri - tion \_\_\_\_\_

21 *f* *f* *meno mosso* *rit.* *mp*

S ap - pa - ri - tion the ap - pa pa pa pa

A ap - pa - ri - tion the ap - pa pa pa pa pa pa pa pa pa pa pa pa pa pa pa

T ap - pa - ri - tion the ap - pa pa pa pa pa pa pa

B ap - pa - ri - tion the ap - pa pa pa pa pa pa

27 *ppp* *mf* *wavering* *with certainty* *f* *rit.* *p* *a tempo* *mf* *fp*

S pa pa ap - pa - ri - tion ap - pa - ri ap - pa

A pa pa pa ap - pa - ri - tion ap - pa - ri ap - pa

T pa ap - pa - ri - tion ap - pa - ri ap - pa

B pa ap - pa - ri - tion ap - pa - ri ap - pa

32 *rit.* *ppp* *rit.* *a tempo* *p* *mf*

S freely, gently *rit.* a - ri - - - - - tion nnn

A pa pa pa pa ri - tion nnn

T tion nnn

B tion nnn

**♩ = 88 fatigued**

38 *mp* *pp* *n* *mp*

S the pa pa pa ap - pa - ri - tion

A the pa pa ap - pa - ri - tion *mp* *mp* *pp*

T the ap - pa - ri - tion *mp* *mp* *pp*

B the ap - pa - ri - tion *mp*

44 *mp* *p* *pp* **♩ = 80 somber**

S ap - pa - ri - tion energetically *mp* *p* G.P. *p* *pp* the

A ap - pa - ri - tion energetically *mp* *p* G.P. *p* the

T ap - pa - ri - tion energetically *mp* *p* G.P. *p* the

B ap - pa - ri - tion energetically *mp* *p* G.P. *p* the

48 *p* G.P. *rit.*

S ap - pa - ri - tion ap - pa - ri - tion

A ap - pa - ri - tion ap - pa - ri - tion

T ap - pa - ri - tion ap - pa - ri - tion

B ap - pa - ri - tion ap - pa - ri - tion

ii: in a station, faces

♩ = 92 mechanically  
mechanically, unpitched

53

S *mf* (glide spectrally) *p* *mf fp*  
In sss A(h) sss—

A *mf* mechanically, unpitched, emphasize (h) *mf fp*  
A(h) A(h) A(h) A(h) A(h) A(h) A(h) A(h) A(h) sss—

T *mf* mechanically, unpitched, emphasize (h)  
In A(h) A(h) fff A(h) A(h) fff A(h) A(h) fff A(h)

B mechanically, unpitched *mf* *p* *mf fp*  
sss A(h) sss—

62

S *rit.* *ppp* a tempo (*mf* "sta" as in "stamina")  
sta Aw sss Eh A(h) sss T(hay)

A *rit.* *ppp* a tempo *mf*  
In sh met sss fff In fff T(hay) ro

T *mf* *rit.* freely, slowly a tempo *mf* ("sta" as in "stamina")  
In a station of the metro A(h) sta T(hay) tro ta in tion me ro

B *rit.* *ppp* a tempo *mf* ("sta" as in "stamina")  
In Aw fff fff sss A(h) sta Aw

68

S smoothly, blending *rit.* *p* > *pp* *mp* > *p* *pp* > n  
sss A(h) sss a a a

A *pp* *ppp*  
Aw fff Eh ro

T *mf* *rit.* freely, slowly a tempo smoothly, legato *mp* *rit.* *p* freely *mf*  
fff Ta In a station of the metro in a in a in a in a station of the metro

B *pp* *ppp* falsetto  
sss Aw Ta Eh ro



86 *f* *p* *pp* *p*

S In sss tion ap - pa a ap - pa - ri - tion ap - pa - ri -

A *f* *p* *pp* *p* *pp* *p* *pp* *p*

A sta of the of the of the ap - pa - ri -

T *f* *p* *pp* *p* *pp* *p* *pp* *p*

sta of the of the of the ap pa ri

B *f* *p* *p* *p*

In a tion ap - pa ap - pa - ri - tion ap - pa - ri -

90 *mp* *p* *mp* *mf* *mp* *mf*

S tion ap - pa ap - pa - ri - tion

A tion of these fa - ces in the crowd ap - pa ap - pa - ri - tion of these fa -

T tion ap - pa ap - pa - ri - tion

B tion ap - pa ap - pa - ri - tion

94 *p* *mp* *p rit.* *p* *ppp*  $\text{♩} = 60$

S ap - pa - ri - tion ap - pa - ri - tion sss

A ces in the crowd ap - pa - ri - tion ap - pa - ri - tion ap - pa

T ap - pa - ri - tion ap - pa - ri - tion ap - pa

B ap - pa - ri - tion ap - pa - ri - tion sss

iii: petals

102 whispered, accentuate S and F

*mf* *p*

~ 12 seconds

sss fa-ces(sss) ssff sss

~ 15 s

*mf* fa-ces(sss) sss ffssfs

~ 10 s

*mf* fa-ces(sss) all these faces sss

~ 5 s

*mf* fa-ces(sss) sss ssffsfs

109 *mp* *mf*

~ 7 s ~ 8 s

pa pa pa pe pe pe pe

~ 4 s ~ 5 s ~ 8 s

pa pa pa pe pe pe pe

~ 15 s ~ 8 s

~ 15 s

116

pe-tals pe pe - tals pe - tals

pe pe-tals pe pe-tals

~ 3 s *mf* falsetto ~ 5 s

pe pe pe pe-tals pe pe-tals

~ 15 s *mf* *p*

120 ~ 15 s increasing density of texture, interact with other singers contrapuntally

S

A ~ 15 s increasing density of texture, interact with other singers contrapuntally

T ~ 15 s increasing density of texture, interact with other singers contrapuntally

B freely 3 3

pe - tals on a wet black bough

126 ~ 20 s

S pe - tals pe pe - tals

A pe pe - tals ~ 15 s

T *mf* pe - tals pe ~ 7 s

B pe - tals on a wet black bough black

130 = 144 # 5/4

S *mf* *p*

A *mf* *p*

T *p* *p* pe - tals on a wet black bough

B = 144 # 5/4

bough wet black bough wet black bough

135 *mf* *pp*

S

A *p*  
on a bough wet bough on a pe black

T *mp*  
pe-tals on a wet black bough pe-tals on a wet black bough pe-tals on pe-tals on a wet black bough

B *p*  
black bough black

139 floating *p*

S pe - - - - - tals

A *mp*  
bough on a black bough on on a bough on a wet bough

T *mf*  
pe-tals on a wet black bough pe-tals on pe-tals on a wet black bough pe-tals on a wet black bough

B *mp*  
bough pe - tals on a wet black

143

S pe - - - - - tals  
(pe' as in 'petals')

A on a wet on a pe on a wet petals on petals on on a wet bough

T *mp*  
petals on a wet black bough petals on petals on a wet black bough petals on a wet black bough petals on a wet black bough  
(pe' as in petals)

B on on a bough on a pe on a pe black pe on a bough

148

S of these fa - ces in the

A on a on of these fa on a wet bough of these fa faces in  
(‘fa’ pronounced as in ‘faces’)

T petas on petals on a wet black bough petals on a wet black bough petals on a wet black bough petals on

B on a faces in black in faces in in the

153

S crowd

A in the crowd pe-tals on in the crowd on a wet crowd on a

T pe-tals on a wet black bough pe-tals on a wet black bough pe-tals on a wet black bough pe-tas on

B crowd in the crowd black crowd in a crowd on a

157

S of these fa - ces in the

A on of these fa on a wet bough of these fa fa-ces in

T pe-tals on a wet black bough pe-tals on a wet black bough pe-tals on a wet black bough pe-tals on

B fa-ces in black on on a bough in the

161

S  
crowd

A  
in a crowd pe-tals on in the crowd on a wet bough

T  
pe-tals on a wet black bough pe-tals on a wet black bough pe-tals on a wet black bough

B  
crowd on a pe black crowd on a bough

164

S  
*mp*  
of these fa - ces in the crowd

A  
*mf*  
on a of these fa - ces of these fa - ces petals on a

T  
*f*  
petas on petals on a wet black bough petals on a wet black bough petals on a wet black bough

B  
*mf*  
on a fa - ces in the crowd

168

S  
of these fa - ces in the crowd

A  
of these fa - ces of these fa - ces of these fa - ces pe - tals

T  
pe - tals on a wet pe - tals on a wet black wet pe - tals on a wet black bough

B  
pe - tals wet fa ces in the

171

S *f* in a sta-tion of the met-ro

A *f* of these fa-ces *f* in a sta-tion of the met-ro *mf* pe-tals on a wet black bough

T *f* pe-tals on a wet black bough *f* pe-tals on a wet black pe-tals on a wet black bough

B *f* crowd in a sta-tion of the met-ro

174

S *mf* ap - pa - ri - tion pe - tals \_\_\_\_\_ ap - pa - ri - tion

A *mf* pe-tals on a ap - pa - ri - tion ap - pa - ri - tion

T *mf* pe-tals on a ap - pa - ri - tion pe - tals on a wet black ap - pa - ri - tion

B *mf* ap - pa - ri - tion pe - tals on a wet black ap - pa - ri - tion

179

S *p* ap - pa - ri - tion ap - pa - ri - tion *pp* ap - pa - ri - - - - tion

A *p* ap - pa - ri - tion ap - pa - ri - tion *pp* ap - pa - ri - - - - tion

T *p* ap - pa - ri - tion ap - pa - ri - tion *pp* ap - pa - ri - - - - tion

B *p* ap - pa - ri - tion ap - pa - ri - tion *pp* ap - pa - ri - - - - tion